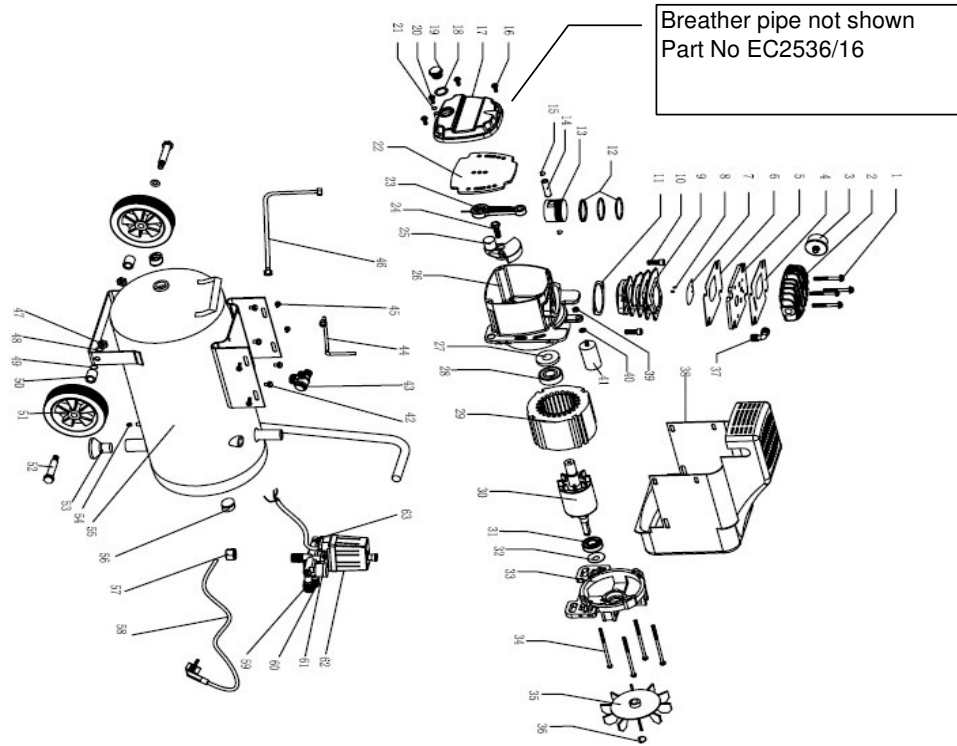




## Ross Compressor RAAC2/24

## Eagle Compressor EC2/24



### PARTS ILLUSTRATION

| NO | Designation           | Qty | NO | Designation          | Qty |
|----|-----------------------|-----|----|----------------------|-----|
| 1  | Bolt M6x40            | 4   | 33 | motor cover          | 1   |
| 2  | cylinder head         | 1   | 34 | bolt M5x105          | 4   |
| 3  | Air filter            | 1   | 35 | fan                  | 1   |
| 4  | cylinder head gasket  | 1   | 36 | circclip             | 1   |
| 5  | valve plate           | 1   | 37 | connector            | 1   |
| 6  | valve plate gasket    | 1   | 38 | fan cover            | 1   |
| 7  | valve clack           | 1   | 39 | nut M8               | 1   |
| 8  | valve clack pin       | 2   | 40 | dentation washer φ 8 | 1   |
| 9  | cylinder              | 1   | 41 | capaciance           | 1   |
| 10 | hex bolt M8x25        | 2   | 42 | rubber washer        | 4   |
| 11 | cylinder gasket       | 1   | 43 | umflateralism        | 1   |
| 12 | piston ring           | 3   | 44 | release pipe         | 1   |
| 13 | piston                | 1   | 45 | bolt M5x14           | 6   |
| 14 | piston pin            | 1   | 46 | discharge pipe       | 1   |
| 15 | circclip              | 2   | 47 | nut M10              | 2   |
| 16 | bolt M5x16            | 4   | 48 | spring φ 8           | 2   |
| 17 | crank case cover      | 1   | 49 | washer φ 10          | 2   |
| 18 | oil leveler gasket    | 1   | 50 | hollow column φ 10   | 2   |
| 19 | oil leveler           | 1   | 51 | wheel                | 2   |
| 20 | bolt M6x10            | 1   | 52 | blot M10             | 2   |
| 21 | O circlip φ 5.6x φ 1. | 1   | 53 | washer foot          | 1   |
| 22 | rubber gasket         | 1   | 54 | drain valve          | 1   |
| 23 | connecting rod        | 1   | 55 | tank                 | 1   |
| 24 | hex bolt M8x22(left)  | 1   | 56 | stem Rp1/2           | 2   |
| 25 | crank                 | 1   | 57 | nut Rp1/4            | 1   |
| 26 | crank case            | 1   | 58 | power cord           | 1   |
| 27 | sealing ring          | 1   | 59 | quick couplers       | 2   |
| 28 | brearing 6204         | 1   | 60 | regulator valve      | 1   |
| 29 | stator                | 1   | 61 | pressure gauge       | 2   |
| 30 | rotor                 | 1   | 62 | pressure switch      | 1   |
| 31 | brearing 6202         | 1   | 63 | safety valve         | 1   |
| 32 | wave washer D35       | 1   | 64 |                      |     |



| Ref | Listed as        | JW Ross Part No. | Description.         |
|-----|------------------|------------------|----------------------|
|     |                  | EC224/WHKIT      | WHEEL KIT T/S EC2/24 |
| 47  | nut M10          | ↑                | ↑                    |
| 48  | spring 8         |                  |                      |
| 49  | washer 10        |                  |                      |
| 50  | hollow column 10 |                  |                      |
| 51  | wheel            |                  |                      |
| 52  | bolt m10         |                  |                      |
| 53  | washer foot      |                  |                      |

| Ref | Listed as       | JW Ross Part No. | Description.                       |
|-----|-----------------|------------------|------------------------------------|
|     |                 | EC224/REG        | PRESSURE REG AND SWITCH T/S EC2/24 |
| 62  | Pressure Switch | ↑                | ↑                                  |
| 61  | Pressure guage  |                  |                                    |
| 59  | Quick Couplers  |                  |                                    |
| 60  | Regulator Valve |                  |                                    |
| 63  | Saftey valve    |                  |                                    |

| Ref | Listed as            | JW Ross Part No. | Description.                |
|-----|----------------------|------------------|-----------------------------|
|     |                      | EC224/VP         | VALVE PLATE ASSY T/S EC2/24 |
| 4   | Cylinder head gasket | ↑                | ↑                           |
| 5   | Valve plate          |                  |                             |
| 6   | Valve plate gasket   |                  |                             |
| 7   | valve clack          |                  |                             |
| 8   | valve clack pin      |                  |                             |

|    |                      |          |                              |
|----|----------------------|----------|------------------------------|
| 2  | Cylinder head        | EC224/2  | CYLINDER HEAD T/S EC2/24     |
| 3  | Air Filter           | EC224/3  | AIR FILTER T/E EC2/24        |
| 4  | cylinder head gasket | EC224/4  | UPPER HEAD GASKET T/S EC2/24 |
| 6  | Valve plate gasket   | EC224/6  | LOWER HEAD GASKET T/S EC2/24 |
| 19 | oil leveler          | EC224/19 | SIGHT GLASS T/S EC2/24       |
| 22 | Rubber Gasket        | EC224/22 | SUMP GASKET T/S EC2/24       |
| 38 | Fan Cover            | EC224/38 | MOTOR COWLING T/S EC2/24     |
| 43 | umilateralism        | EC224/43 | NON RETURN VALVE T/S EC2/24  |
| 54 | drain valve          | EC224/54 | DRAIN VALVE T/S EC2/24       |
| 63 | Saftey valve         | EC224/63 | SAFTEY VALVE T/S EC2/24      |

|  |  |           |                       |
|--|--|-----------|-----------------------|
|  |  | EC2536/16 | BREATHER T/S EC2.5/36 |
|--|--|-----------|-----------------------|